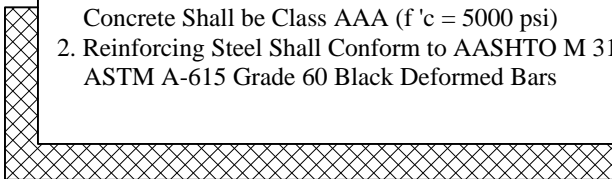


Est Weight: 9,150 Lbs

General Notes

1. Precast Concrete Shall Conform to AASHTO M 199. Concrete Shall be Class AAA ($f'c = 5000$ psi)
2. Reinforcing Steel Shall Conform to AASHTO M 31, ASTM A-615 Grade 60 Black Deformed Bars



Not to Scale

Phoenix
Precast
Products

Dual 18" RCP
Winged Headwall

P/N: HWW-D18